

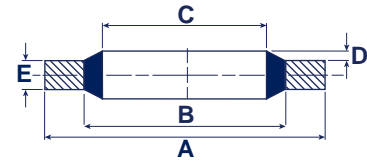
FRENCH METRIC RANGE

METRIC THREADS TO ISO R261 BS3643

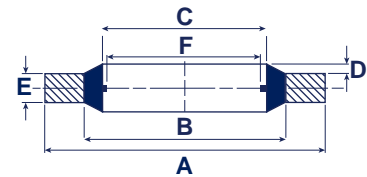
REFERENCE	THREAD SIZE	A +0.13 -0.00	B +0.10 -0.10	C +0.10 -0.10	D +0.25 -0.00	E +0.10 -0.10	F +0.20 -0.20	APPROX BURST PRESSURE (BAR)
MB45-301*	3	7.50	5.00	3.60			-	1950
MB45-302	4	9.00	6.00	4.60		1.00	3.40	2000
MB45-303	5	10.00	7.00	5.60			4.50	1780
MB45-304	6	11.00	8.00	6.60			4.70	1680
MB45-305*	6	13.27	8.00	6.85	0.30	1.30	-	1970
MB45-306	6	11.40	8.40	7.00		1.00	4.70	1540
MB45-307	8	13.00	10.00	8.60			6.40	1330
MB45-310	10	17.00	12.10	10.70			8.56	1730
MB45-312	11	18.10	13.20	11.80			9.80	1600
MB45-313	12	19.00	14.10	12.70			9.73	1530
MB45-315	13	20.10	15.20	13.80	0.40	1.50	10.80	1440
MB45-316	14	21.00	16.10	14.70	0.30		11.38	1370
MB45-317	16	23.00	18.10	16.70			13.41	1240
MB45-318	17	23.70	18.80	17.40	0.40		13.08	1200
MB45-319*	16.5	23.90	18.70	17.20	0.40	2.10	-	1020
MB45-320	18	27.00	20.40	18.70	0.30		14.76	1450
MB45-321	20	29.00	22.40	20.70			16.76	1340
MB45-323	21	30.00	23.40	21.70			17.80	1290
MB45-324	22	31.00	24.40	22.70			18.74	1240
MB45-325	23	32.00	25.40	23.70			19.30	960
MB45-326	24	33.00	26.40	24.70		2.00	20.11	1160
MB45-327	26	35.30	28.70	27.00			22.30	870
MB45-328	27	36.00	29.40	27.70			23.30	1060
MB45-329	28	36.00	30.30	28.60			24.80	730
MB45-330*	28.5	37.50	30.90	29.20	0.40		-	810
MB45-331	30	39.00	32.40	30.70			25.70	970
MB45-332	33	42.00	35.40	33.70			28.70	900
MB45-333	36	48.00	39.60	37.00			31.10	1010
MB45-334	39	51.00	42.60	40.00		2.50	34.10	950
MB45-335	42	54.00	45.60	43.00		+0.15 -0.15	36.50	890
MB45-336	45	57.00	48.60	46.00			39.50	860
MB45-337	48	60.00	51.60	49.00			41.90	790

*Washers not available in Self-Centralising.

PLAIN



SELF-CENTRALISING

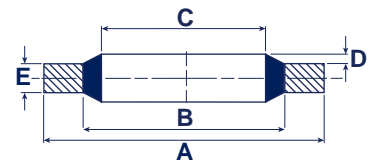


WHEN ORDERING SELF-CENTRALISING BONDED WASHERS ADD SC TO BARNWELL REFERENCE, EG MBSC45-004

REFERENCE	THREAD SIZE BSPF	A +0.00 -0.20	B +0.20 -0.00	C +0.20 -0.00	D +0.25 -0.00	E +0.15 -0.15	APPROX BURST PRESSURE (BAR)
MB45-519	1/16	12.70	9.90	8.30			1100
MB45-510	1/8	14.70	12.00	10.40			930
MB45-511	1/4	18.70	15.75	13.85		1.25	790
MB45-512	3/8	22.70	19.25	17.35			775
MB45-513	1/2	26.70	23.55	21.65	0.25		580
MB45-514	3/4	32.50	29.20	27.30			500
MB45-515	1.0	39.50	36.10	34.20			410
MB45-516	1.1/4	49.50	44.70	42.80		2.00	500
MB45-517	1.1/2	55.50	50.60	48.70			430
MB45-518	2.0	68.50	62.40	60.50			445

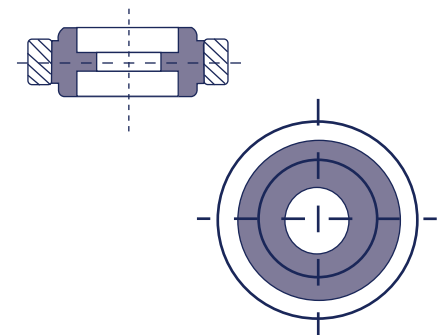
CETOPS

(Recommended in ISO 1179:1973)



BARDOK

Sealing Washers



A unique sealing washer, with its own elastomer configuration. Popular wherever there is an anaesthetic gas application, such as hospitals, dental surgeries, veterinary clinics, etc.

More information available on request.

FRENCH METRIC RANGE

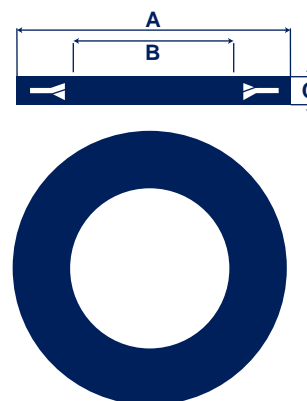
METRIC THREADS TO ISO R261 BS3643



PART NO.	TO SUIT BOLT DIA.		A		B		C	
	INCH	mm	INCH	mm	INCH	mm	INCH	mm
MB1321-001	6 B.A. (.110) & No.4 U.N.C. (.112)	2.5/2.6	.300	7.62	.120	3.05	.050	1.27
MB1321-002	4 B.A. (.140) & No.6 U.N.C. (.138)	3	.340	8.64	.150	3.81	.050	1.27
MB1321-003	3 B.A. (.161) & No.8 U.N.C. (.164)	3.5/4	.400	10.16	.170	4.32	.055	1.40
MB1321-004	2 B.A. (.185) 3/16"	4	.440	11.18	.195	4.95	.060	1.52
MB1321-005	1/4"	6	.525	13.34	.260	6.60	.070	1.78
MB1321-006	5/16"	8	.640	16.26	.325	8.26	.070	1.78
MB1321-007	3/8"	9	.730	18.54	.385	9.78	.080	2.03
MB1321-008	7/16"	10	.825	20.56	.448	11.38	.090	2.29
MB1321-009	1/2"	12	.920	23.37	.515	13.08	.090	2.29
MB1321-010	9/16"	14	1.010	25.65	.580	14.73	.090	2.29
MB1321-011	5/8"	16	1.110	28.19	.640	16.26	.100	2.54
MB1321-012	3/4"	18	1.295	32.90	.765	19.43	.105	2.67
MB1321-013	7/8"	22	1.440	36.58	.900	22.86	.110	2.79
MB1321-014	1"	24	1.675	42.55	1.020	26.29	.120	3.05

BARLOC

Rubber Covered Lock Washers

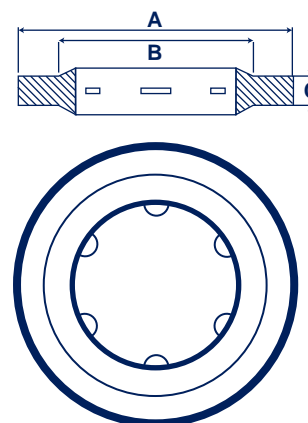


A dual purpose, vibration resistive lock washer, which protects as it locks. Ideal for surface coated with paint, plating, enamel, etc. Suitable for use with water, mineral base oils and alkalis, over a temperature range of -10°C to +80°C. Extensively used in the automotive and domestic appliance industries.

PART NO.	THREAD DIA.		A		B		±.005	±.013
	INCH	mm	INCH	mm	INCH	mm	INCH	mm
MB1127-700	2 B.A. (.185) 3/16 No.10 U.N. (.190)	5	.385	9.78	.220	5.59	.050	1.27
MB1127-701	1/4	6	.517	13.13	.292	7.42	.060	1.53
MB1127-702	5/16	8	.557	14.15	.357	9.07	.060	1.53
MB1127-703	3/8 & 1/8 B.S.P. (.383)	10	.622	15.80	.427	10.85	.060	1.53
MB1127-704	7/16	11/12	.747	18.98	.482	12.24	.060	1.53
MB1127-705	1/2 & 1/4 B.S.P. (.518)	-	.807	20.50	.567	14.40	.060	1.53
MB1127-706	5/8	16	.997	25.33	.677	17.20	.060	1.53
MB1127-707	3/8 B.S.P. (.656)	-	.934	23.72	.707	17.96	.060	1.53
MB1127-708	3/4	18	1.055	26.80	.805	20.45	.080	2.03
MB1127-709	13/16 & 1/2 B.S.P. (.825)	20	1.120	28.45	.885	22.48	.080	2.03
MB1127-710	7/8 & 3/8 B.S.P. (.902)	22/24	1.245	31.63	.960	24.38	.080	2.03
MB1127-711	1 & 3/4 B.S.P. (1.041)	27	1.370	34.80	1.120	28.45	.080	2.03
MB1127-712	1 3/16 & 7/8 B.S.P. (1.189)	30	1.495	37.98	1.255	31.88	.080	2.03
MB1127-713	1 5/16 & 1 B.S.P. (1.309)	33	1.680	42.67	1.380	35.05	.080	2.03
MB1127-716	1 5/8 & 1 1/4 B.S.P. (1.650)	42	2.057	52.25	1.680	42.67	.080	2.03

BARLOC

Nylon Captive Washers



A nylon captive sealing washer for screwed assemblies, suitable for applications of 200 lbf/in² working pressure.

- ✦ Easily pre-assembled and stored with components
- ✦ Much lighter than traditional copper washers
- ✦ Excellent mechanical properties
- ✦ Extremely durable
- ✦ Resistant to oils and fuels
- ✦ Not prone to electrolytic corrosion

Widely used in the motor industry and particularly suitable for use on sumps, gearboxes, axles and drain plugs. Not recommended for use in temperatures over 100°C.